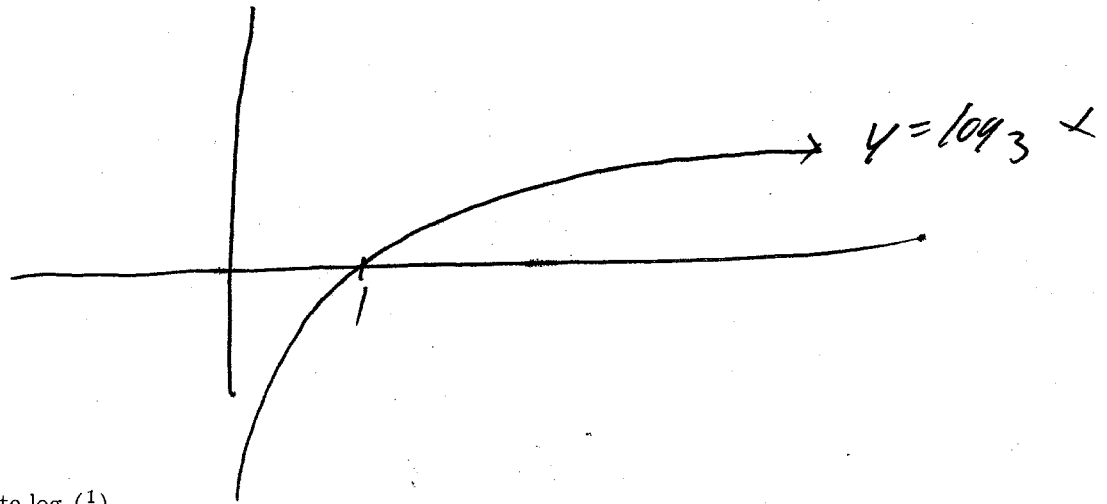


SOLUTIONS

Quiz #4 - October 3, 2007

1. Neatly sketch the graph $y = \log_3(x)$.



2. Evaluate $\log_2(\frac{1}{8})$.

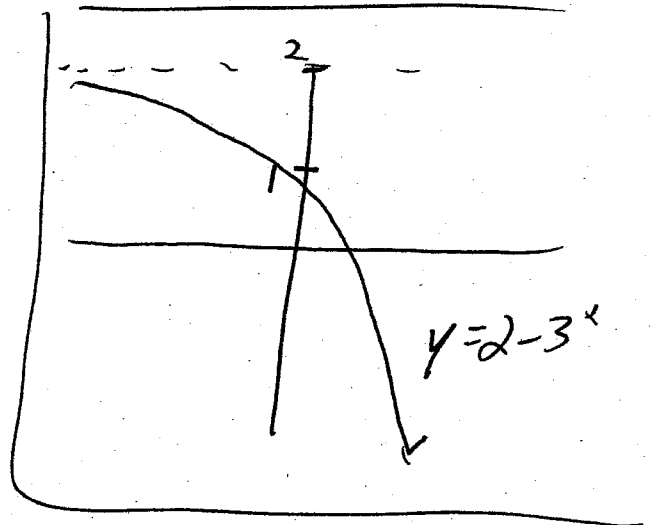
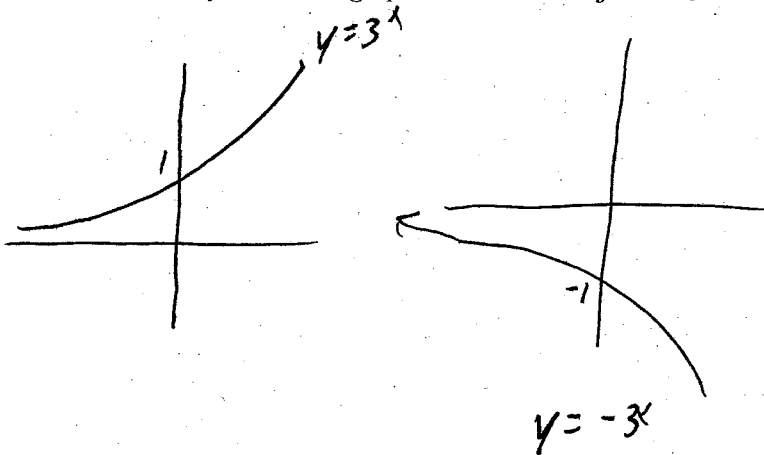
-3

Name:

SOLUTIONS

Quiz #3 - October 1, 2007

1. Neatly sketch the graph of the function $y = 2 - 3^x$.



2. Evaluate $(\frac{1}{2})^{-3}$.

$$= \frac{1}{(\frac{1}{2})^3} = \textcircled{8}$$